



# Oncology Basics Course: On-Demand Refresher for Pharmacy Trainees



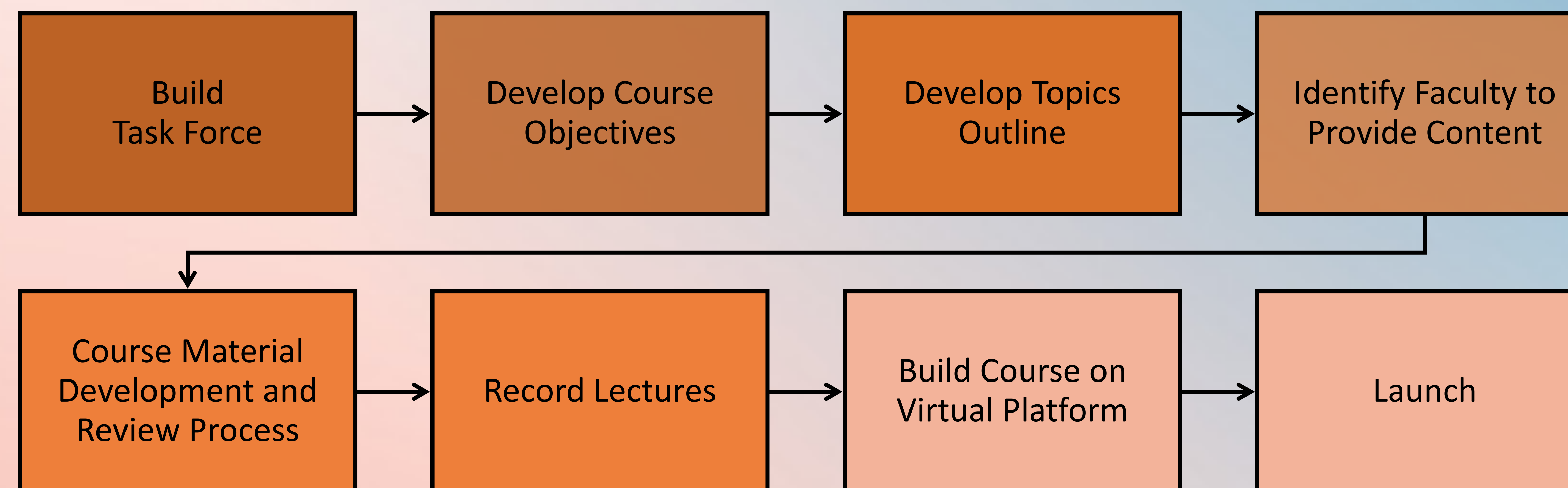
Yarelis Díaz-Rohena, PharmD<sup>1</sup>; Jenna Len, PharmD Candidate<sup>2</sup>; Julianne Darling, PharmD, BCOP<sup>1</sup>

<sup>1</sup>NCODA; <sup>2</sup>University of Toledo

## Background

- The number of board certified oncology pharmacists grew from 836 in 2008 to 2761 in 2019, and continues to grow.<sup>1</sup>
- Today, there are 109 PGY-2 Oncology Pharmacy Residency Programs accredited by ASHP in the United States.<sup>2</sup>
- The quality of oncology education in the pharmacy school curricula does not seem to meet the needs of students interested in exploring the field.
- A study conducted in 2015 found that an average of 42 hours were spent on oncology coursework throughout the pharmacy education program, and were limited on the topics covered.<sup>3</sup>
- The typical duration of a treatment-focused oncology course in the top 20 rated programs in the United States is 4 to 6 weeks.<sup>4</sup>
- Only 25% of these institutions offered a pharmacy-focused oncology elective, and about 40% included an oncology research-focused elective in their pharmacy program curriculum.<sup>4</sup>

## Course Development Process



## Course Objectives

- Define the etiology, pathogenesis and clinical manifestations of cancer.
- Classify oncology pharmacologic agents by mechanisms of action.
- Evaluate clinical appropriateness of oncological therapy.
- Recall adverse effects and drug interactions associated with classes of oncologic pharmacotherapy.
- Distinguish between toxicity profiles and clinically relevant information of various oncology medications.
- Apply an evidence based and patient-tailored approach to the use of various oncolytics.
- Discuss oncologic emergencies, supportive care, stem cell transplant, and pediatric considerations.
- Outline a patient-specific plan for supportive care, side effect management, and oncologic emergencies.

## Topics Outline

| Module                     | Length          |
|----------------------------|-----------------|
| Introduction               | 2 hours         |
| Supportive Care            | 2 hours         |
| Chemotherapy               | 2.5 hours       |
| Hormonal Cancer Treatments | 1.5 hours       |
| Immunotherapy              | 1 hour          |
| Targeted Therapies         | 2 hours         |
| Stem Cell Transplant       | 1.5 hours       |
| Pediatric Oncology         | 30 minutes      |
| Oncologic Emergencies      | 2 hours         |
| <b>Total</b>               | <b>15 hours</b> |

## Assessing Knowledge

To obtain a certificate of completion, the learner will have two opportunities to pass one quiz per module, which will assess their knowledge upon completion.

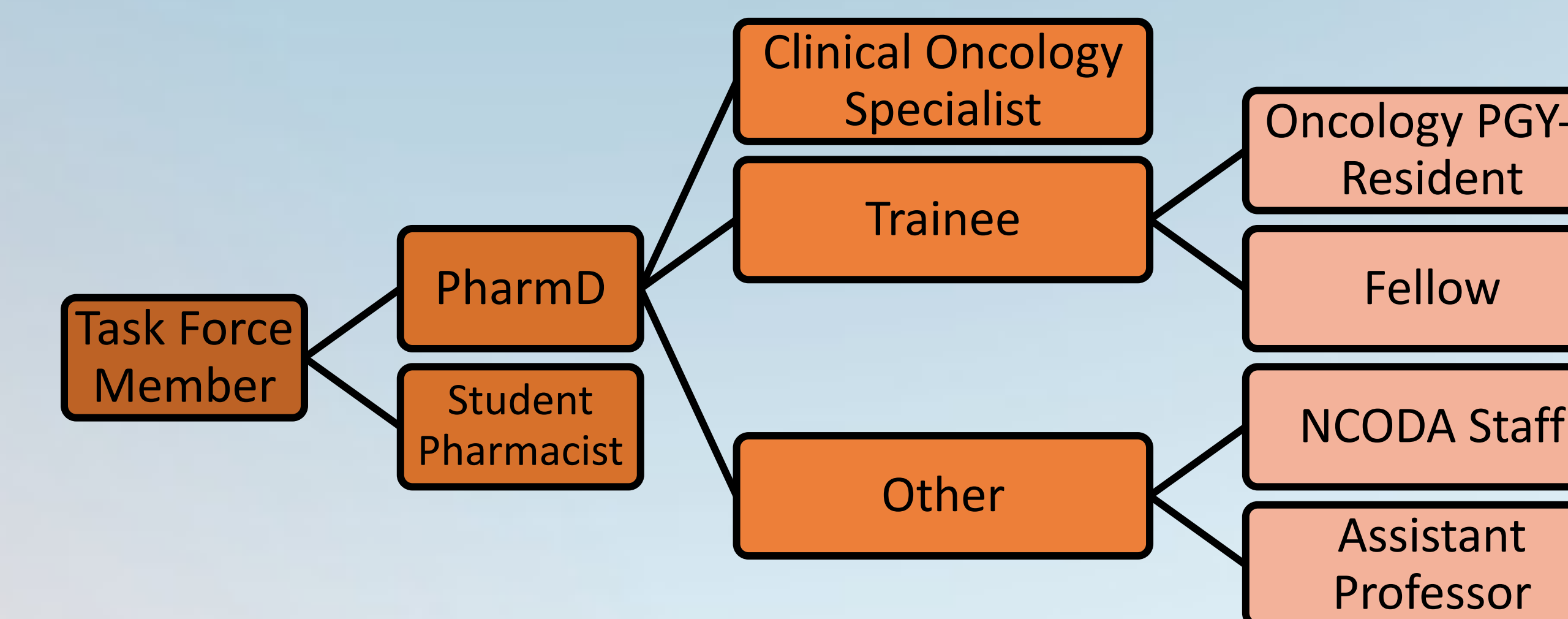
## Target Audience

- Pharmacy students
- Pharmacy residents (PGY-1 and PGY-2)
- Pharmacy fellows

## Learn More & Register



## Task Force Members



## Acknowledgements

The development of this course would have not been possible without the help of our task force: Alanda Barash, PharmD; Alison Palumbo, PharmD, MPH, BCOP; Javier Granados II, PharmD Candidate; Kristie Fox, PharmD; Liberty-Ann Shelton, PharmD Candidate; Loriel Solodokin, PharmD, BCOP; Manny Alfonso, PharmD; Megan Tran, PharmD; Monica Sawiris, PharmD Candidate; Nicole Tadros, PharmD, BCPS; Tahsin Imam, PharmD.

## References

1. Knapp K, Ignoffo R. Oncology Pharmacists Can Reduce the Projected Shortfall in Cancer Patient Visits: Projections for Years 2020 to 2025. *Pharmacy (Basel)*. 2020;8(1):43. Published 2020 Mar 18.
2. Ashp Online Directory. <https://accreditation.ashp.org/directory/#/program/residency>. Accessed February 21, 2023.
3. Kwon J, Ledvina D, Newton M, Green MR, Ignoffo R. Oncology Pharmacy Education and training in the United States Schools of Pharmacy. *Currents in Pharmacy Teaching and Learning*. 2015;7(4):451-457.
4. Best pharmacy programs - top health schools - US news rankings. <https://www.usnews.com/best-graduate-schools/top-health-schools/pharmacy-rankings>. Accessed February 21, 2023.